

# CHAMOT

## Recombinant Mouse CXCL10

CM070-5MP

CM070-20MP

CM070-100MP

CM070-500MP

CM070-1000MP



CHAMOT

喬默生物技術(上海)有限公司  
CHAMOT BIOTECHNOLOGY CO., LTD.

# CONTENT

**1** 产品简介

**2** 产品组成

**3** 产品储存

**4** 产品使用

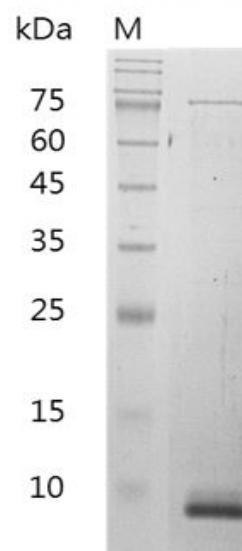
## Recombinant Mouse CXCL10 (C-X-C motif chemokine 10)

编号:	CM070-5MP CM070-20MP CM070-100MP CM070-500MP CM070-1000MP	规格:	5 µg 20 µg 100 µg 500 µg 1 mg
类别:	重组蛋白	应用:	Functional Assay

### 产品简介

**描述:** CXCL10 belongs to the CXC chemokine family, is also known as IP-10. CXCL10 was originally identified as a responder to IFN-gamma in monocytes, endothelial cells and fibroblasts. The effects of this chemokine can be induced by binding to the cell surface chemokine receptor CXCR3. Research shows that CXCL10 is a chemoattractant for activated T-lymphocytes, monocytes and macrophages. It also has other functions, such as promotion of T cell adhesion to endothelial cell.

**来源:** *Escherichia coli*  
**纯度:** >98% as determined by SDS-PAGE.  
**生物学活性:** Measure by its ability to chemoattract human THP1 cells using a concentration range of 50-100 ng/mL.  
**内毒素检测:** < 0.1 EU per 1 µg of the protein by the LAL method.  
**蛋白序列:** IPLARTVRCNCIHIDDGPVRMRAIGKL  
 EIIPASLSCPRVEIIATMKKNDEQRCLN  
 PESKTIKNLKAFSQKRSKRAP with polyhistidine tag at the N-terminus



SDS-PAGE analysis of recombinant mouse CXCL10

### 产品组成

**成分:** 从含有 1X PBS, pH 7.4 溶液中冻干的蛋白质.

## 产品储存/运输

产品形式	储存温度	储存时间
冻干粉	-20℃至-80℃	自收到之日起1年
重悬液（初始）	2℃至8℃	不超过1周
重悬液（经稀释）	-20℃至-80℃	3到6个月

运输方式： 蓝冰

## 产品使用

- 1、开盖前，建议3000-3500rpm离心5min。
- 2、推荐使用无菌水重悬冻干粉，溶液浓度不低于100μg/mL，不高于1mg/mL，并室温静置至少20min以充分溶解。勿涡旋剧烈振荡。
- 3、重悬后的溶液，2-8℃无菌保存不超过1周。
- 4、如需长期保存，推荐使用无菌的含载体蛋白（如0.1%BSA、10%FBS 或5%HSA）的溶液进一步稀释（不低于10ug/mL）后分装保存，-20℃至-80℃无菌保存3到6个月。无血清实验需求时，可更换为5%海藻糖溶液作为载体。避免反复冻融。

WB= Western Blot; IP= Immunoprecipitation; IF= Immunofluorescence; IHC= Immunohistochemistry;  
FACS= Fluorescence activated Cell Sorting; FA= Functional Assay